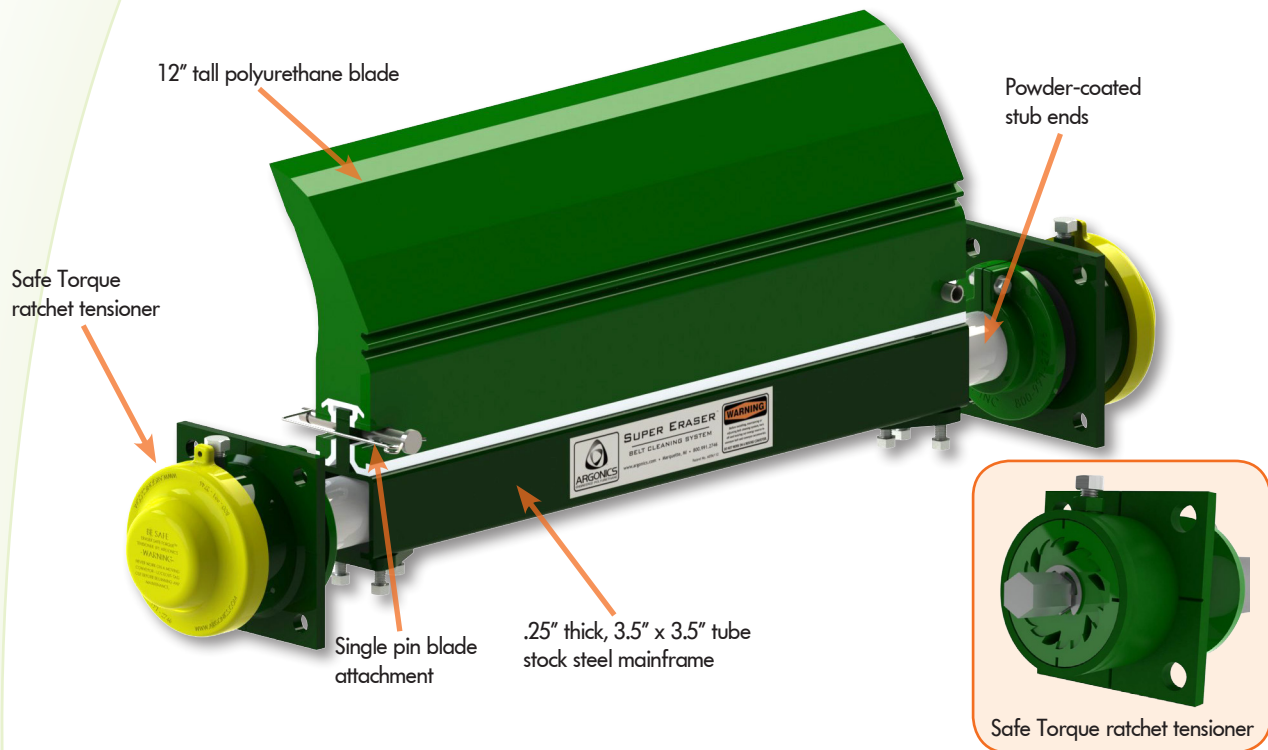


SUPER ERASER™

PRIMARY CONVEYOR BELT CLEANING SYSTEM

The Super Eraser is a Mine Duty cleaner. It has a .25" (6 mm) thick, 3.5" x 3.5" (89 mm x 89 mm) box steel mainframe and a massive 12" (305 mm) polyurethane blade. It will handle anything you throw at it. If you're dealing with high speed, high tonnage belts, the Super Eraser was built specifically for you.



BENEFITS

- For use on conveyors with large head pulleys, big loads, harsh conditions and/or fast belt speeds
- Extremely effective cleaning performance with an 12" (305 mm) Raptor blade and rugged mainframe
- The Perma-Torque™ internal central tensioner is adjustable from 30 to 135 ft-lb (40 to 183 Nm) resulting in uniform cleaning pressure to the conveyor belt
- Compact mounting footprint only protrudes 5.5" (140 mm) from mounting structure
- Safety yellow colored end caps seal the Safe Torque™ ratchet from dust and water contamination
- Single pin blade attachment means quick blade change out with less downtime

BLADES

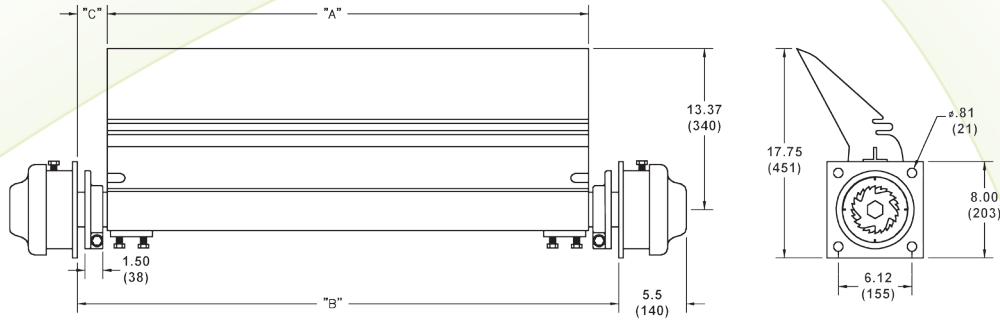
- N62 Ether**
Normally used for extremely wet applications, sands & fines
- B93 Ester**
Our high temperature cleaning blade, up to 250°F (121°C)
- R80 Ether**
Good for wet applications with any pH level
- FO83 Ester**
MSHA approved Front Line® flame-retardant cleaning blade
- G83 Ester**
Our standard, high abrasion-resistant all-purpose cleaning blade
- RU83 Ester**
Flame retardant, anti-static cleaning blade
- U90**
Good for dry applications with any pH level



ARGONICS
ENGINEERED POLYURETHANE

SIZING INFORMATION

Dimensions - in. (mm)



Part Number	A		Min B.		Max B.		Min C.		Max C.		Shipping Weight	
	inches	(mm)	inches	(mm)	inches	(mm)	inches	(mm)	inches	(mm)	lbs	(kg)
CP-SE2-A34D-G83	34.00	(864)	44.50	(1130)	64.00	(1626)	5.25	(133)	15.50	(394)	190.00	(86)
CP-SE2-A40D-G83	40.00	(1016)	44.50	(1130)	70.00	(1778)	2.25	(57)	15.50	(394)	221.00	(100)
CP-SE2-A46D-G83	46.00	(1168)	46.50	(1181)	76.00	(1930)	0.25	(6)	15.50	(394)	239.00	(108)
CP-SE2-A52D-G83	52.00	(1321)	52.50	(1334)	82.00	(2083)	0.25	(6)	15.50	(394)	257.00	(117)
CP-SE2-A58D-G83	58.00	(1473)	58.50	(1486)	88.00	(2235)	0.25	(6)	15.50	(394)	275.00	(125)
CP-SE2-A70D-G83	70.00	(1778)	70.50	(1791)	100.00	(2540)	0.25	(6)	15.50	(394)	310.50	(141)

NOTES:

- To get minimum B or C, the shaft collars must be removed.
- Standard sizes shown above. Other sizes are available from 22" (559 mm) to 120" (3048 mm).

SPECIFICATIONS

Recommended Belt Speeds

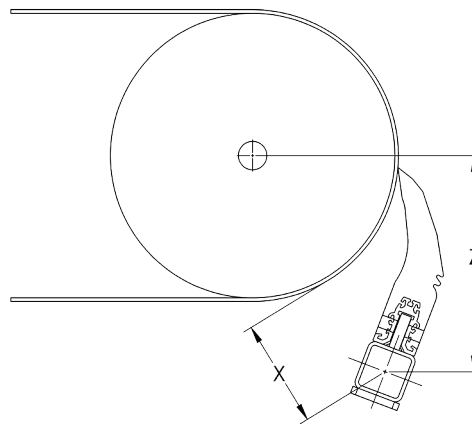
0 - 1000 fpm (3.81 m/s)

Pulley Diameter (PD)

Minimum: 24" (610 mm)

Maximum: 60" (1524 mm)

MOUNTING INFORMATION



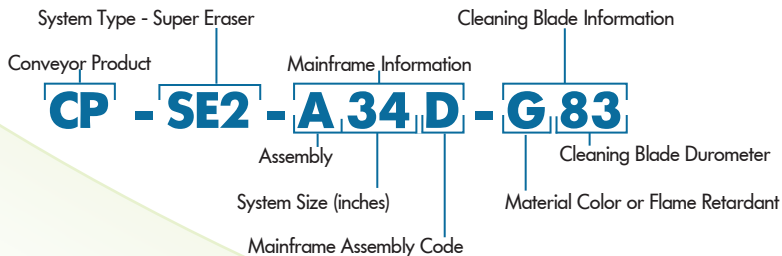
Pulley Diameter

X

Z

24" - 25" (610 mm - 635 mm)	8.5" (216 mm)	15.75" (400 mm)
26" - 28" (660 mm - 711 mm)	8" (203 mm)	15.75" (400 mm)
29" - 31" (737 mm - 787 mm)	7.5" (190 mm)	15.75" (400 mm)
32" - 35" (813 mm - 889 mm)	7" (178 mm)	15.75" (400 mm)
36" - 40" (914 mm - 1016 mm)	6.5" (165 mm)	15.75" (400 mm)
41" - 45" (1041 mm - 1143 mm)	6" (152 mm)	15.75" (400 mm)
46" - 49" (1168 mm - 1245 mm)	5.75" (146 mm)	15.75" (400 mm)
50" - 60" (1270 mm - 1524 mm)	5.5" (140 mm)	15.75" (400 mm)

NOMENCLATURE



Notes:

Stainless steel systems are available. Contact your Argonics rep. for more information.



Jamieson Equipment Company
www.jamiesonequipment.com
toll free 800.875.0280